



M&E for NAP process

16.02.2017, Bangkok

Wiriya Puntub
Risk-based NAP project



On behalf of:



of the Federal Republic of Germany



Risk-based National Adaptation Plan (NAP) Project

Objectives: Assist ONEP to ...

- Develop the National Adaptation Plan
- Integrate climate change adaptation into sector policies
- Facilitate NAP implementation in subnational planning

Mainstreaming

Piloting

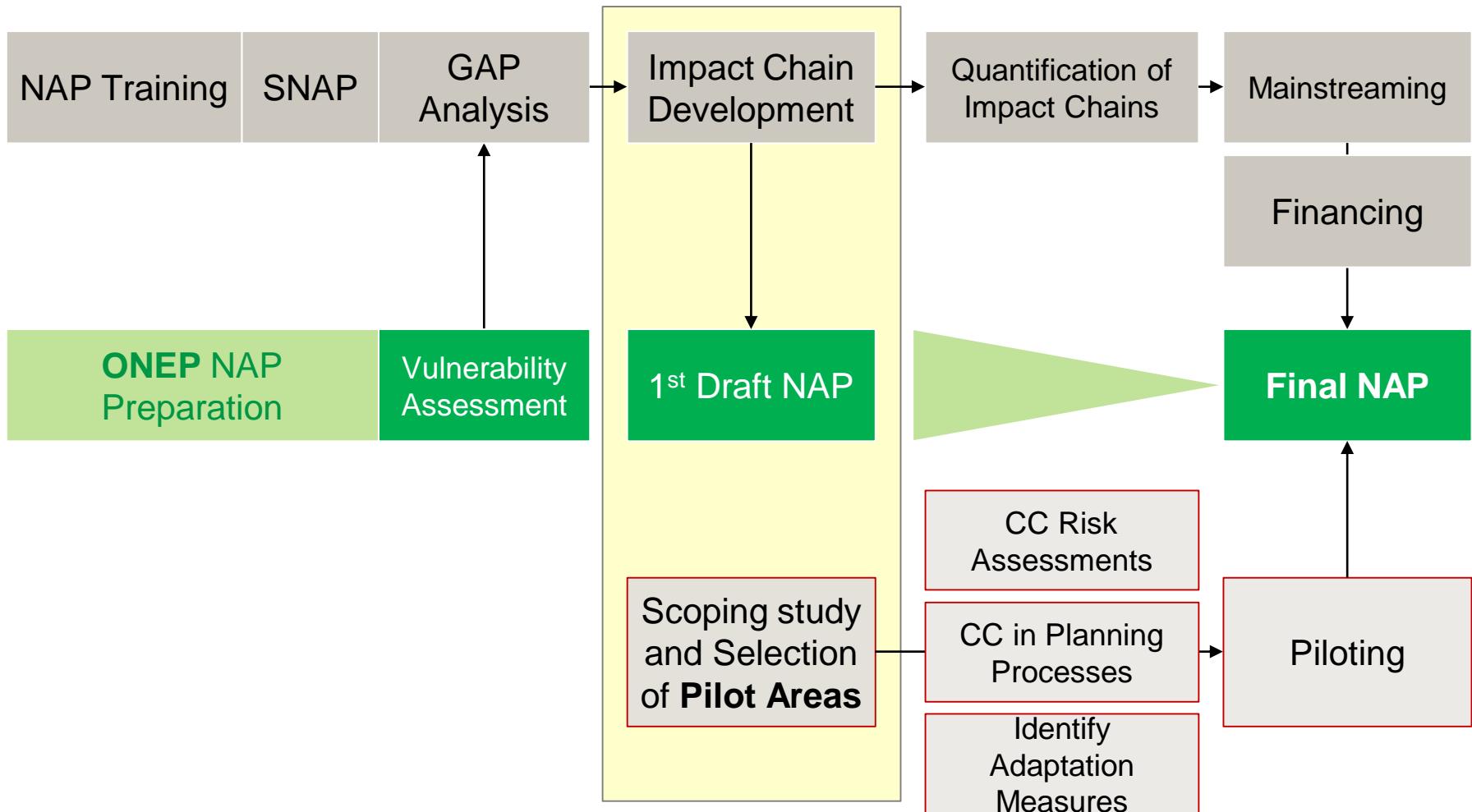
**Refine and finalize the
NAP**

- Assess financing options for climate change adaptation in Thailand

Timeframe: **2015-2019**

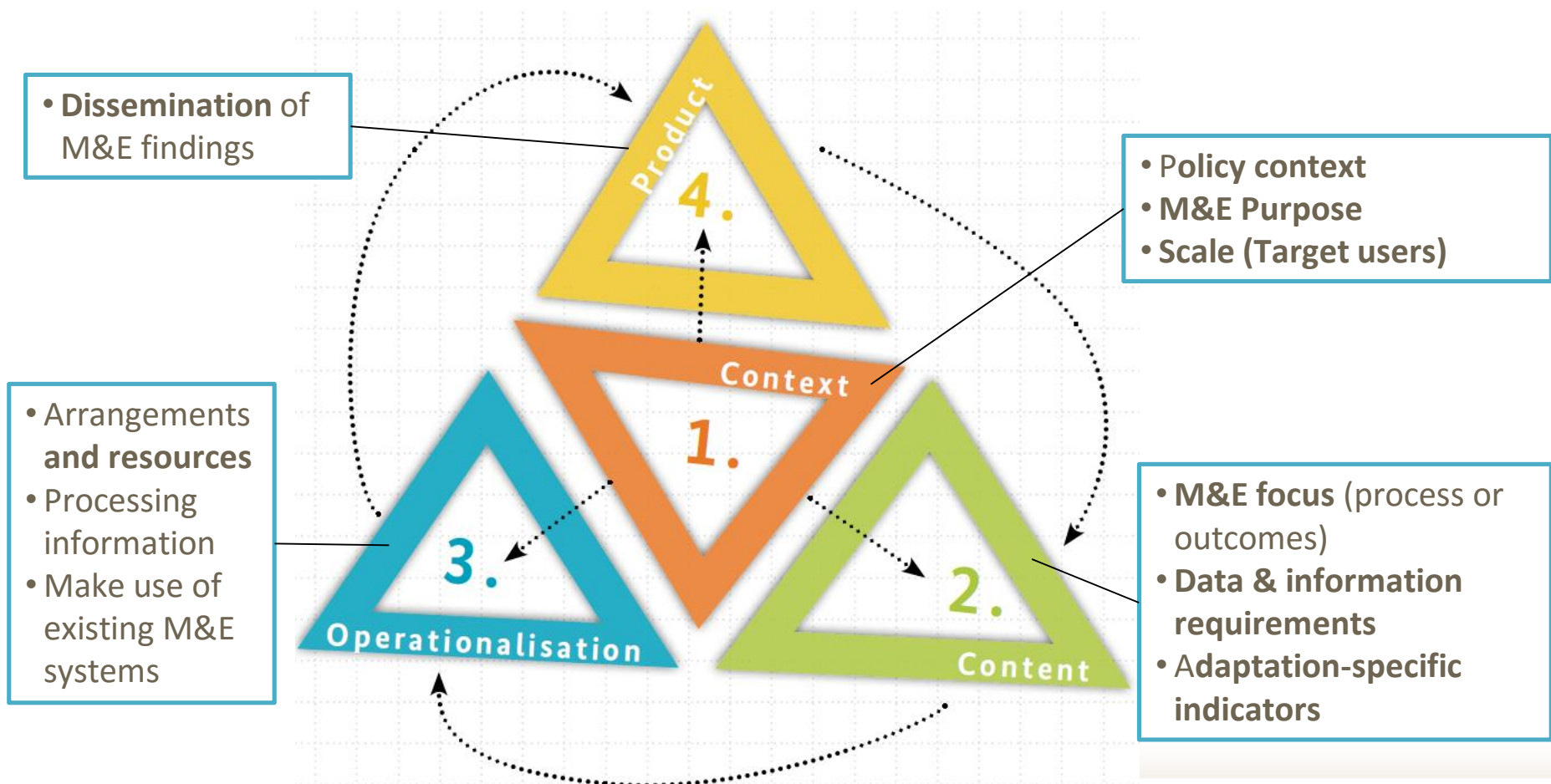


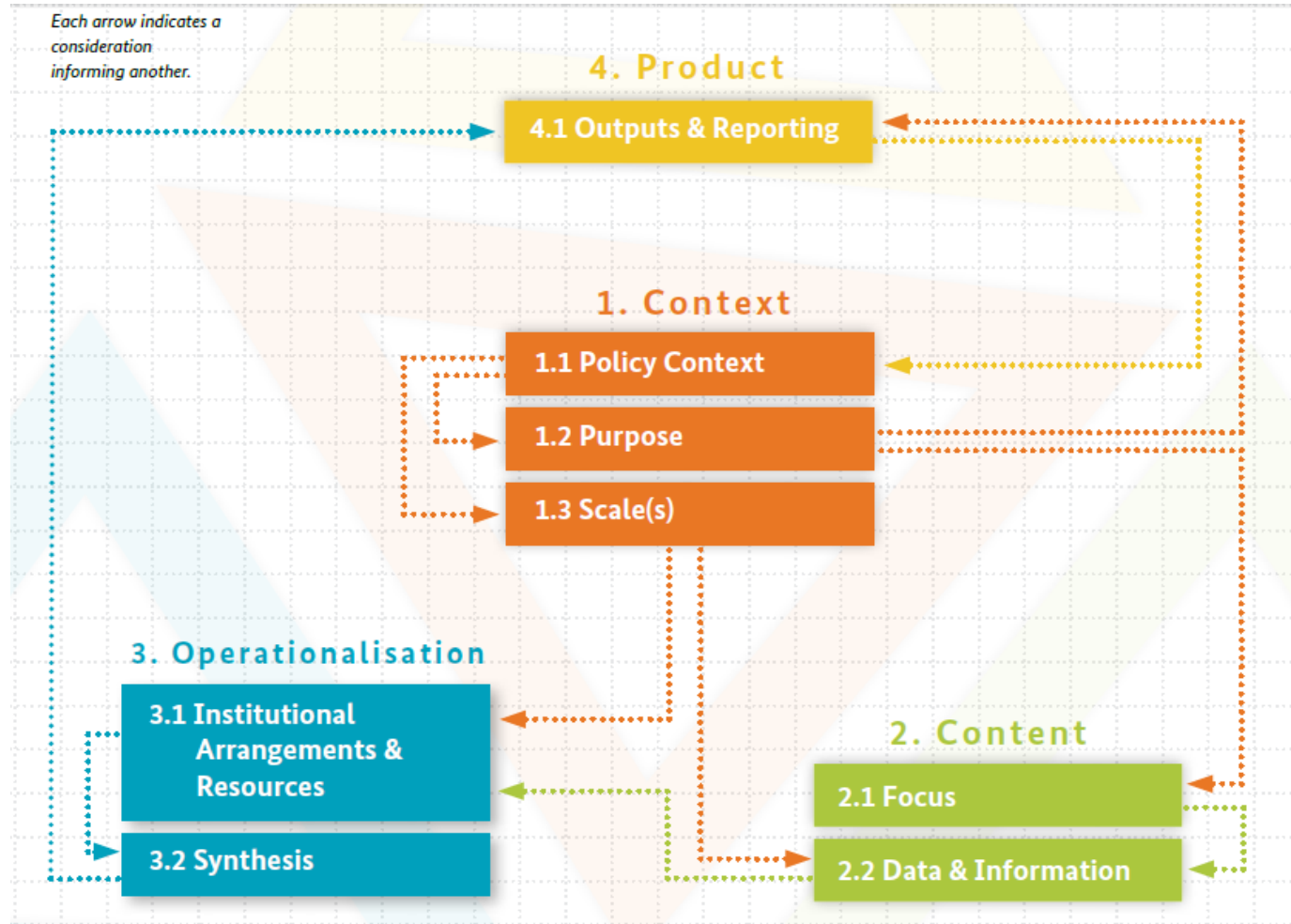
Current Status





Four building blocks for setting up a national adaptation M&E system







1. Context

Policy Context

- How does M&E of adaption fit with in your broader policy and existing M&E?



Purpose

- What is the purpose of the M&E system and intended use if its results?

- Adaptive management
- Learning
- Accountability

Scale (s)





2. Content

Data and Information requirements

Focus



What type of data and information do you require to fulfill the purpose the M&E system?

- Data (purpose, scale (s), focus >> data identification)
- Indicators (*purpose, relevant, time & res needed, alignment with existing data sources/M&E system*)
- Baseline

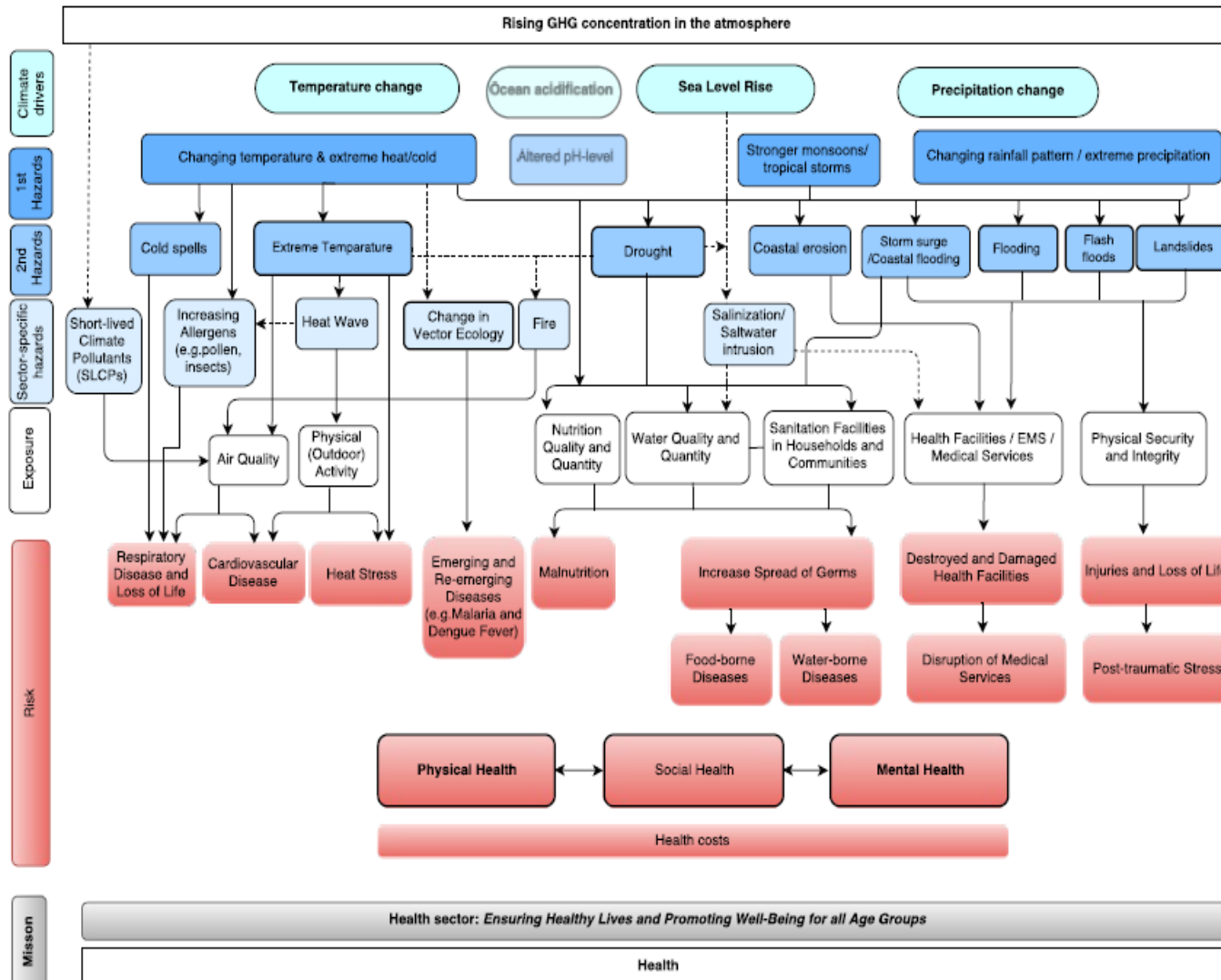
What do you want to monitor?

- Process
- Adaptation Outcomes
- - Hybrid?? - -

“B list” : *may be monitored in the future if feasible*



Impact Chains: Health Sector

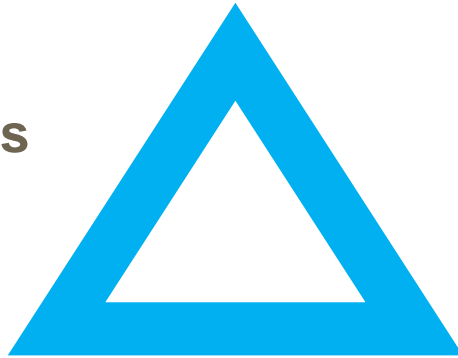


	Required Data	Potential Sources
Sensitivity	Number of Health Facilities	MOPH
	Medical Service Data (e.g. no. of doctors, nurses and beds)	MOPH
	Number of Households and Population in Communities	MOPH, NSO
	Household Location	WWA
	Household Registration	NSO, MOI
	Water Supply and Demand	MWA, PWA
	Air quality	PCD
	Quantity of Water Need for Health Facilities	WWA
	Temperature and Rainfall Data	TMD
	Climate Scenario	SEA, START, GISTDA
Risk	Occupation Data	NSO, DOA, MOL
	Mortality and Morbidity, Hospital Admissions, Emergency Cases	MOPH
	Epidemics	MOPH
	Environmental, Occupational and Mental Health	MOPH
	Climate Scenario	SEA, START



3. Operationalization

Synthesis

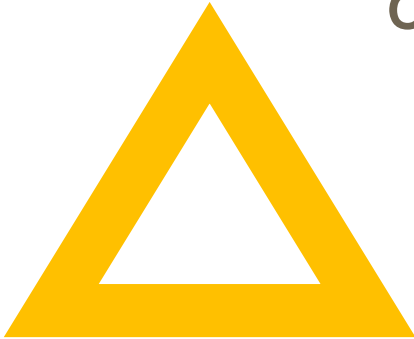


Institutional arrangement
and resources

- How can the information be gathered?
- Who is responsible/involved in M&E?
- Which **data sources** already exist?
- How can **data access** be organized?
- How is the data being analysed and by whom?
- What level of **resources** is required?
- How is the **M&E system** being institutionalized?



4. Products



Outputs and reporting

- **How will the information be made available** (frequency and timing)?
- What is the **target audience** and **how can it be reached**?
- Which **communication formats** are effective?
- Report? Online platform? Social media?
- How can the **reporting frequency** be linked to relevant policy processes?
- How can the **information be shared internationally** (NDC, International partners)?



Learn more:



Responsible person: **Timo Leiter**

[E-mail: Timo.Leiter@giz.de](mailto:Timo.Leiter@giz.de)

[Twitter: @TimoLeiter](https://twitter.com/TimoLeiter)

www.AdaptationCommunity.net



Thank You

E-mail: wiriya.Puntub@giz.de

