

# Introduction to ADAP-T

---

## ADAP-T

**Advancing co-Design of integrated strategies  
with AdaPtation to climate change in Thailand**

**2016-2020**

***Associate Professor Dr. Thanya Kiatiwat***

***July 12, 2016***

# **IMPAC-T**

**Integrated study on Hydro-Meteorological Prediction  
and Adaptation to Climate Change in Thailand**



**2009-2014**



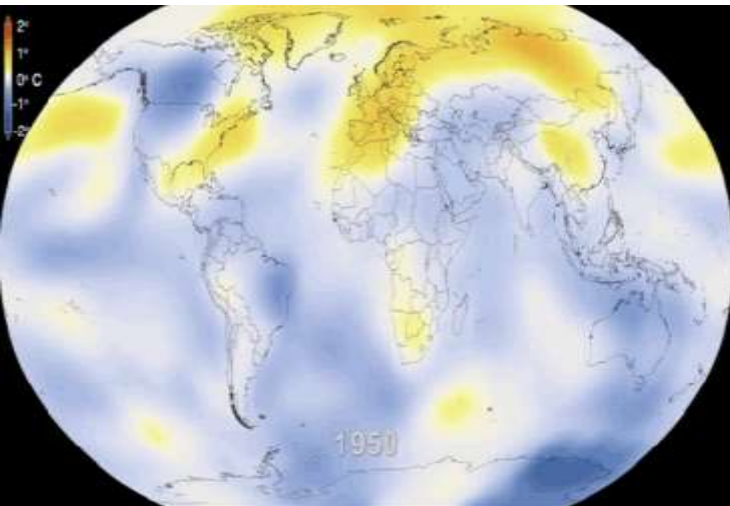
**25 March 2009**



Integrated study on Hydro-Meteorological Prediction  
and Adaptation to Climate Change in Thailand



## Research Project



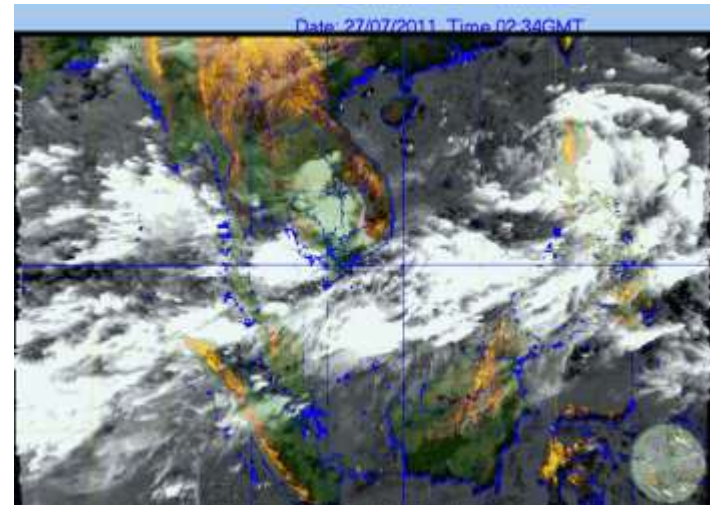
**Climate Change**

การเปลี่ยนแปลง  
สภาพภูมิอากาศ



**Hydro(Water)**

น้ำ



**Meteorology**

อุตุนิยมวิทยา



# OUTPUTS / OUTCOMES

 **IMPAC-T** 

**Integrated study on Hydro-Meteorological Prediction  
and Adaptation to Climate Change in Thailand**



2009-2014



# Experiences of IMPAC-T and ADAP-T

## ADAP-T

Advancing co-Design of integrated strategies  
with AdaPtation to climate change in Thailand

2016-2020



Integrated study on Hydro-Meteorological Prediction  
and Adaptation to Climate Change in Thailand



2009-2014



# ADAP-T'S GOAL

---

**Development of resilient and sustainable solutions  
for climate change in Thailand**

# ADAP-T'S OBJECTIVES

---

- 1) Determine Appropriate Adaptation Technology and Measures due to CC to support Thailand Adaptation to Climate Change Strategies.
- 2) Support and Review National Adaptation Plans (NAPs) of Thailand.

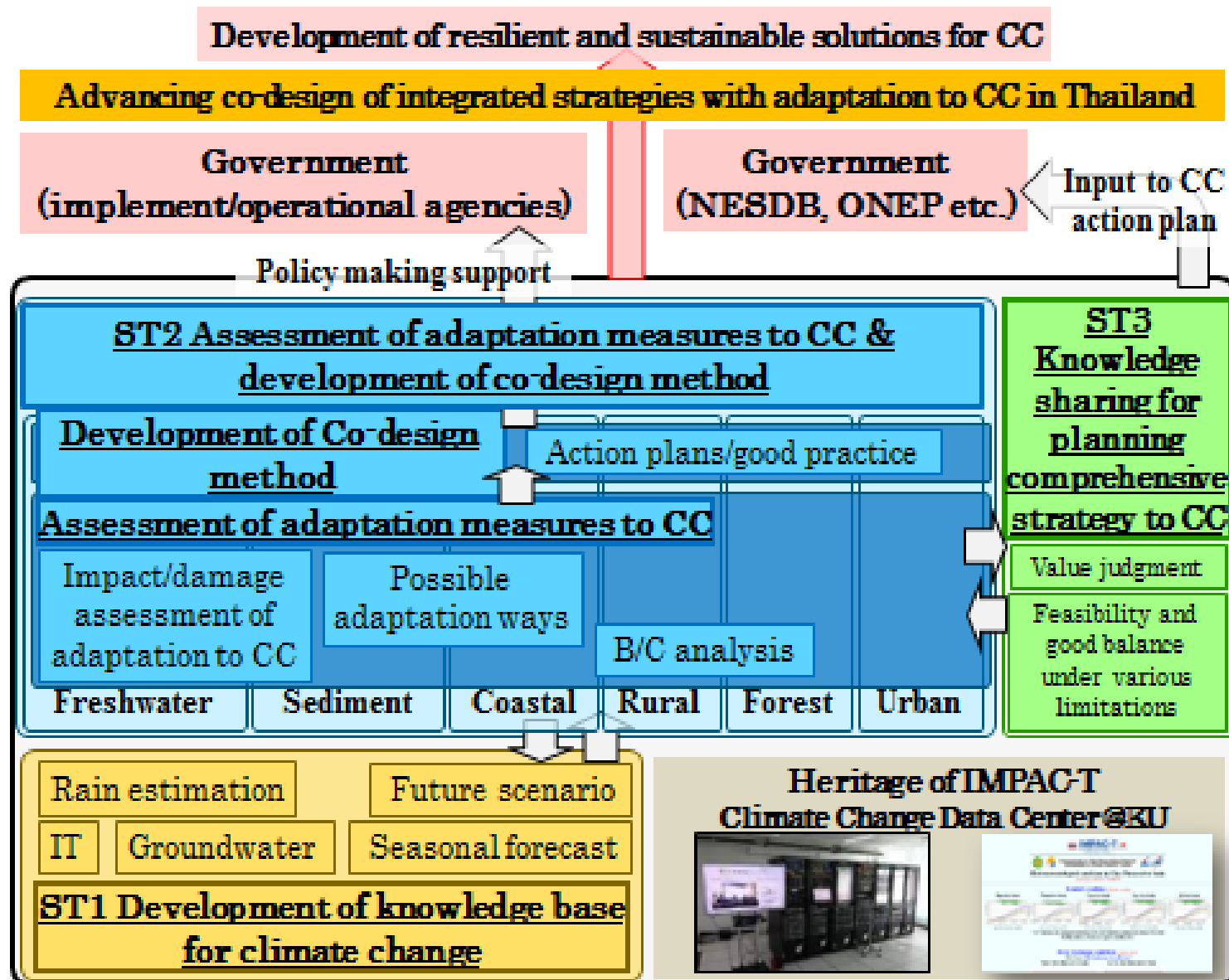
# ADAP-T'S OBJECTIVES

---

- 3) Support related action plans for the corresponding government agencies.
- 4) Transfer Technologies and Knowledge based on Adaptation to CC from Japanese researchers.
- 5) Develop Thai researchers through the Adaptation to CC Issue.



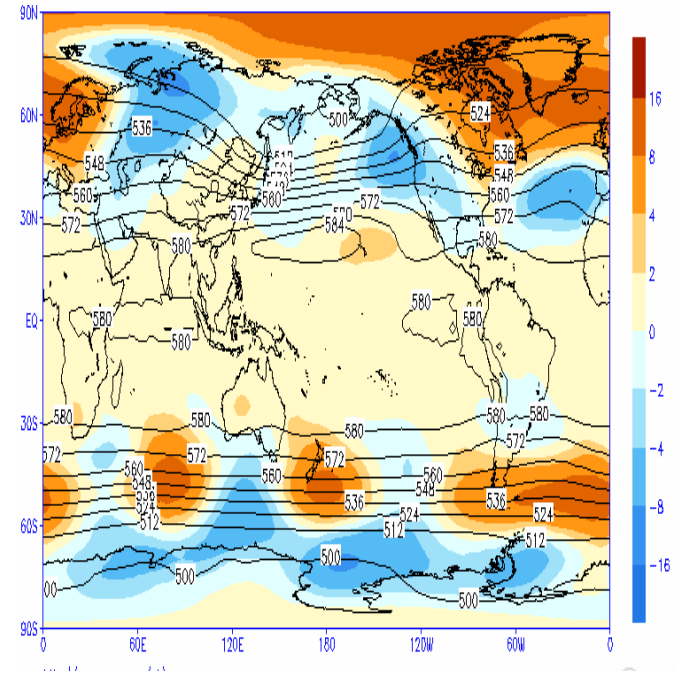
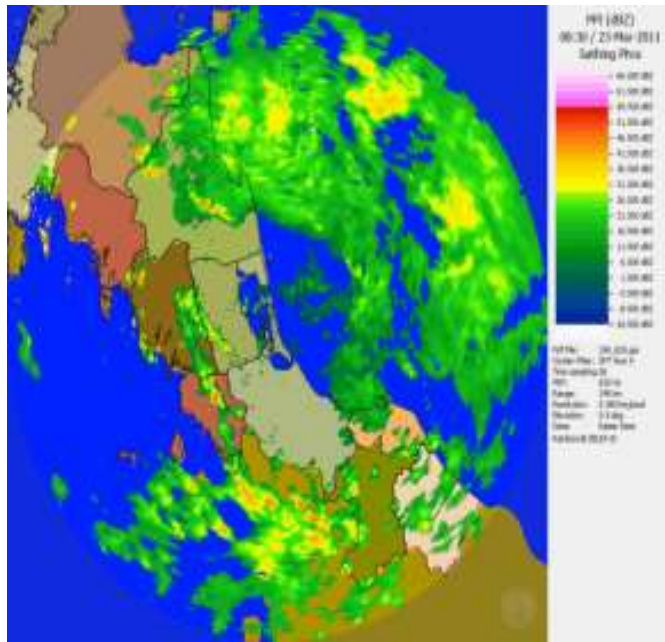
# ADAP-T'S STRUCTURE



# ADAP-T'S ST1 :

## Development of Knowledge Base for Climate Change

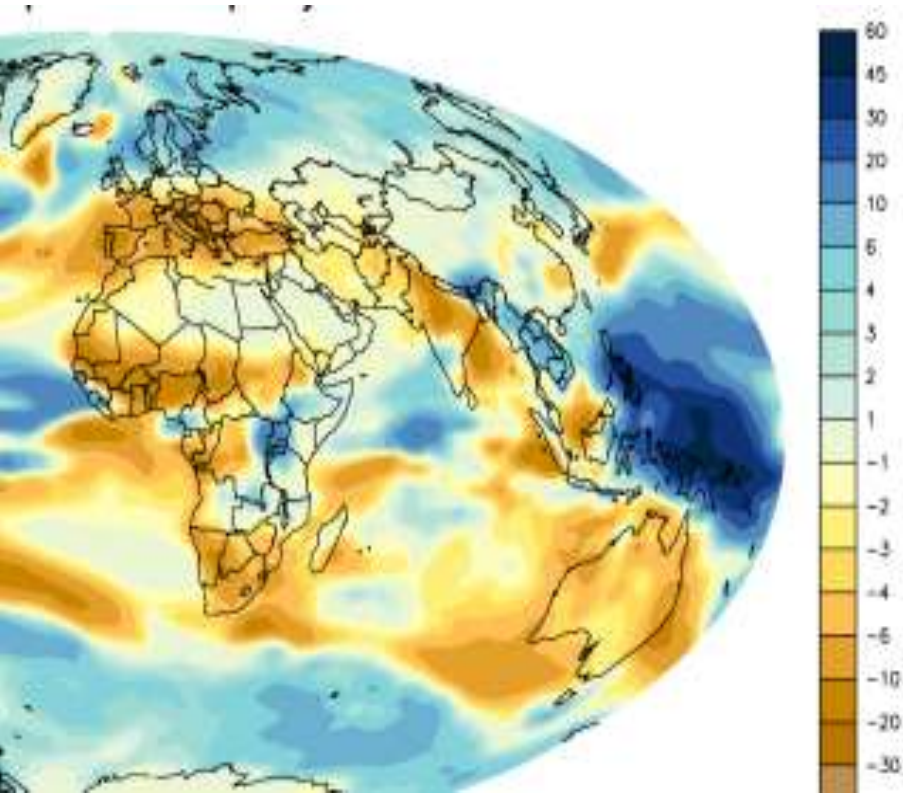
- 1) IT
- 2) Rain Estimation
- 3) Seasonal Forecast



# ADAP-T'S ST1 :

## Development of Knowledge Base for Climate Change

### 4) Future Scenario



### 5) Ground Water





# ADAP-T'S ST2 :

## Assessment of Adaptation Measures for Climate Change and Development of Co-Design methods

### 1) Freshwater



### 2) Forest



### 3) Rural



# ADAP-T'S ST2 :

## Assessment of Adaptation Measures for Climate Change and Development of Co-Design methods

### 4) Urban



### 5) Coastal



### 6) Sediment





# ADAP-T'S ST3 :

## Knowledge Sharing for Planning Comprehensive Strategies to Climate Change

---

- 1) **Support and Review National Adaptation Plans (NAPs) of Thailand**
  
- 2) **Output/Outcome**
  - ➔ **Portfolio of co-Design of integrated strategies based upon Adaptation to CC**

# **CORRESPONDING WORKING AGENCIES**

---

- 4 major core agencies  
→ **KU+RID+TMD+ONEP**
- 11 related Thai Agencies
- 4 Thai Universities
- **UT + Japanese Universities**
- **JICA + JST**

# **CORRESPONDING RESEARCHERS**

---







## **Thai Researchers (79 Researchers)**

- 15 related Thai Agencies (46 Researchers)**
- 4 Thai Universities (33 Researchers)**

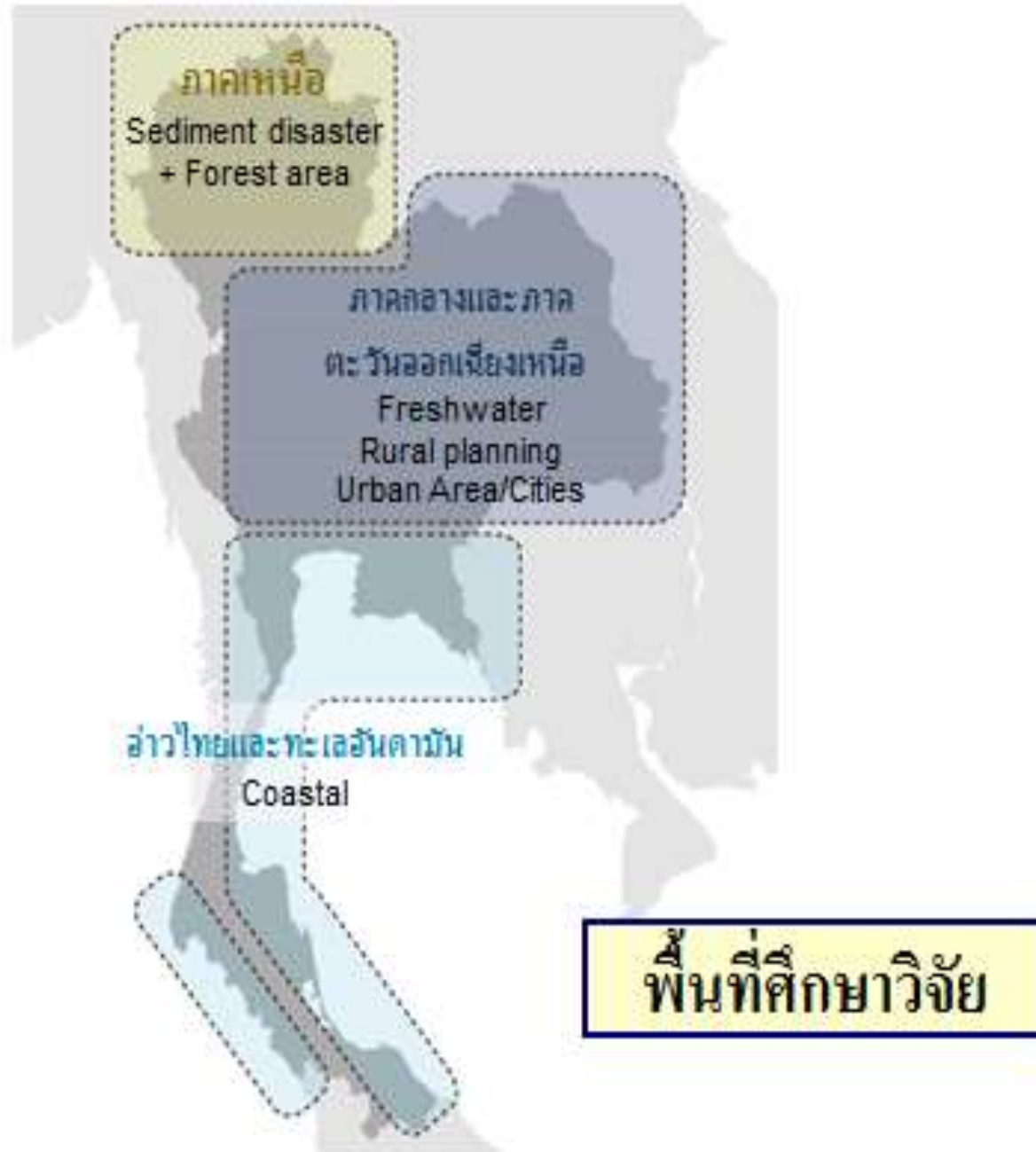
## **Japanese Researchers**

- UT + Japanese Universities**

# CORRESPONDING WORKING AGENCIES

(3) Knowledge sharing	<u>Knowledge sharing</u>				OAE	ONEP	   Nagoya U
	RID Representative of each sector				TMD	DWR	
(2) Assessment adaptation & development of co-design	<u>Integration</u>				FoE, KU		  Kasetsart University IIS, The University of Tokyo
	<u>Freshwater</u>	DGR	TMD	DDPM	RID	NIES   NagasakiU   KyotoU FoA, UTokyo	
		CU					
	<u>Forest</u>	DNP		RED	FoE, KU		
	<u>Sediment</u>	KMUTT	DMR	RID	FoE, KU		
	<u>Coastal</u>	DMCR			FoE, KU		
	<u>Urban</u>	BMA	FoE, KU		KMUTT	Nagoya U	
	<u>Rural</u>	OAE	LDD	FoA, KU		IbarakiU   Tohoku U   TohokuTech	
		DOAE	ALRO	KKU	FoE, KU		
	(1) Knowledge base for CC	<u>Groundwater</u>	LDD	FoE, KU	FoS, KU		
<u>Precip. prediction</u>		KU		TMD		Nagasaki U	
<u>Seasonal forecast</u>		RID	TMD	KMUTT		TokyoTech.   Hokkaido U	
<u>Future scenario</u>		RID	TMD	FoE, KU		TokyoTech.   Nagasaki U	
<u>IT</u>		RID	TMD	FoE, KU		EDITORIA, UTokyo	
							

# CORRESPONDING WORKING AREAS

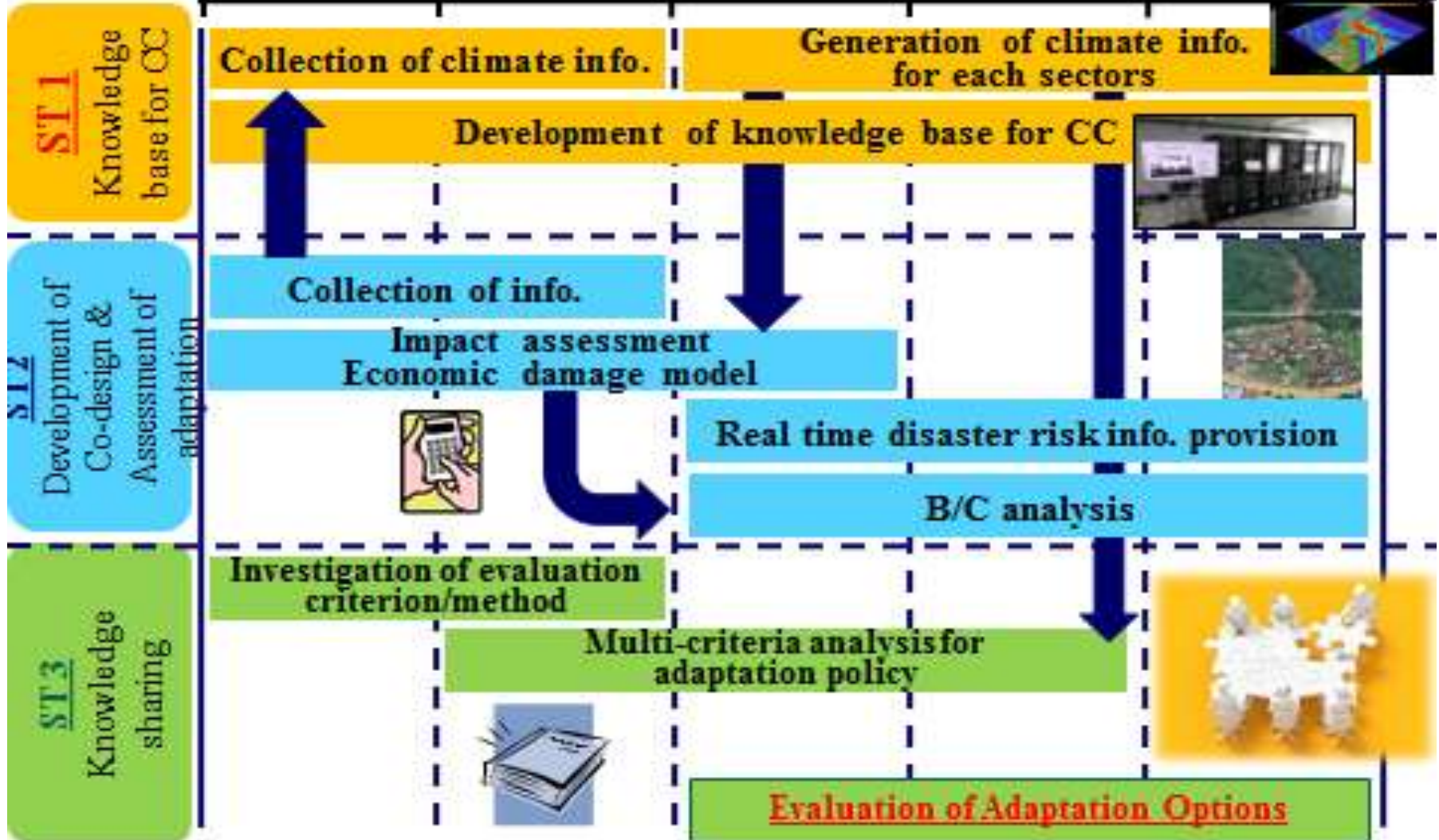




# CORRESPONDING WORKING PLAN

## แผนการดำเนินงานโครงการในระยะเวลา 5 ปี

2016      2017      2018      2019      2020



# **CORRESPONDING BUDGET**

---

- **1 Million Yen each year for each ST (19 STs')  
(Totally 5 million Yen for 5 years)**
- **1 Million Yen for Travelling Expenses in 5 years**
- **Totally 6 Million Yen in 5 years**



Thank You